








## Wenatchee Valley College Venue Information & Rental Rates

WVC rents based on a 1 hour minimum up to 4 hours and over 4 hours. Equipment rental fees and personnel charges may also apply. For more information or to schedule your next event, please visit our website for room scheduling accommodations at <https://www.wvc.edu/events/>. Standard rates are published. Government/Educational and Nonprofit rates are available after submission of request. All pricing is subject to change. Capacity maximums are subject to room layout.

	<p style="text-align: center;"><b>Location Overview</b></p>		<p style="text-align: center;"><b>Location Overview</b></p>
	<p style="text-align: center;"><b>General Classrooms</b></p> <p>General classrooms are equipped with a teaching station that includes a computer, projector, document camera and screen. Classrooms are “as is” layout.</p> <p style="text-align: center;"><b>Capacity: 40</b>  <b>Flat Rate:</b>                  ≤ 4Hours (1 hr. min.): \$30.00                  &gt;4 Hours: \$55.00</p>		<p style="text-align: center;"><b>Cafeteria Dining Room VTC5015</b></p> <p>With floor-to-ceiling windows, the cafeteria offers great natural light and is a versatile space that is perfect for banquets, tabling, workshops, large meetings, conferences and forums. Special configurations are available.</p> <p style="text-align: center;"><b>Capacity: 150</b>  <b>Flat Rate:</b>                  ≤ 4Hours (1 hr. min.): \$100.00                  &gt;4 Hours: \$150.00</p>
	<p style="text-align: center;"><b>Wells Hall Theater WEL1068</b></p> <p>The Wells Hall Theater is an ideal space for lectures, banquets, forums, meetings and gatherings. The room's open floor plan is capable of multiple set ups. It also offers a stage, full projection screen and sound system.</p> <p style="text-align: center;"><b>Capacity: 168</b>  <b>Flat Rate:</b>                  ≤ 4Hours (1 hr. min.): \$100.00                  &gt;4 Hours: \$150.00</p>		<p style="text-align: center;"><b>Student Center Lounge VTC5004</b></p> <p>The Student Center Lounge is located in Van Tassell Center. It is available to rent in limited capacity with prior approval from Campus Life. Various layouts are available.</p> <p style="text-align: center;"><b>Capacity: 140</b>  <b>Flat Rate:</b>                  ≤ 4Hours (1 hr. min.): \$75.00                  &gt;4 Hours: \$125.00</p>
	<p style="text-align: center;"><b>Eller Fox Lecture Hall EFS3015</b></p> <p>This lecture hall is suited for presentations, lectures and speakers. It is equipped with a computer console and projector.</p> <p style="text-align: center;"><b>Capacity: 70</b>  <b>Flat Rate:</b>                  ≤ 4Hours (1 hr. min.): \$75.00                  &gt;4 Hours: \$125.00</p>		<p style="text-align: center;"><b>Cafeteria Conference Room VTC5015A</b></p> <p>This space is a multi-purpose room located within the cafeteria. Equipped with floor-to-ceiling windows that offer natural light. It is perfect for small gatherings or banquets.</p> <p style="text-align: center;"><b>Capacity: 32</b>  <b>Flat Rate:</b>                  ≤ 4Hours (1 hr. min.): \$75.00                  &gt;4 Hours: \$125.00</p>



### Computer Labs

WVC computer labs are ideal for software trainings, workshops, testing and a variety of tutorials. They include Internet access and an instructor station.

**Capacity: 30**  
**Flat Rate:**  
 ≤ 4Hours (1 hr. min.): \$40.00  
 >4 Hours: \$75.00



### Smith Gymnasium GYM4007

Our gymnasium is available for events, tournaments and practices. For more information and fees, please contact Athletics at 509.682.6771.

**Capacity: 800**  
**Flat Rate:**  
 ≤ 4Hours (1 hr. min.): \$75.00  
 >4 Hours: \$300.00



### Wenatchi Hall Lecture WTI 2105 and 2106

Wenatchi Hall Lecture Halls are equipped with ITV, multiple TVs, document cameras and multimedia stations and can accommodate various presentations.

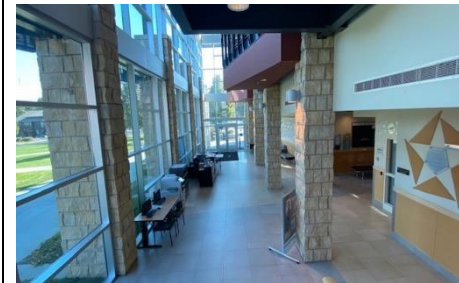
**Capacity: 80**  
**Flat Rate:**  
 ≤ 4Hours (1 hr. min.): \$75.00  
 >4 Hours: \$125.00



### Brown Library Lyceum BLM9100

The Lyceum, located in the Brown Library, is suited for presentations, lectures and seminars. It is equipped with a computer console and projector.

**Capacity: 94**  
**Flat Rate:**  
 ≤ 4Hours (1 hr. min.): \$75.00  
 >4 Hours: \$125.00



### Wenatchi Hall Atrium

The atrium of Wenatchi Hall is a bright, open space lit by three floors of floor to ceiling windows. This flexible lobby is well suited for registrations, networking, or vendor tabling needs.

**Capacity: 200**  
**Flat Rate:**  
 ≤ 4Hours (1 hr. min.): \$50.00  
 >4 Hours: \$50.00



### Fountain Area

The fountain area is suitable for fun fundraisers, open-air banquets, or vendor fairs.

**Capacity: 500**  
**Flat Rate:**  
 ≤ 4Hours (1 hr. min.): \$75.00  
 >4 Hours: \$125.00



### General Conference Rooms

Conference rooms offer an intimate gathering space in a traditional boardroom setup. These rooms accommodate ITV, multimedia and various presentations and meetings.

**Capacity: 20**  
**Flat Rate:**  
 ≤ 4Hours (1 hr. min.): \$75.00  
 >4 Hours: \$125.00



### Athletic Fields

Our soccer fields, softball field and baseball stadium are available for events, tournaments and practices. For more information and fees, please contact Athletics at 509.682.6771.

**Capacity: 500**  
**Flat Rate:**  
 ≤ 4Hours (1 hr. min.): \$75.00 - \$125.00  
 >4 Hours: \$150.00 - \$350.00





**Mish ee twee Conference Center  
MET1103**

The Conference Center's open floor plan is capable of hosting multiple set-ups, including classroom, banquet and hollow square. The full projection and sound system make it ideal for lecturing or large meetings.

**Capacity: 200**  
**Hourly Rate:**  
**≤ 4Hours (1 hr. min.): \$138.00**  
**>4 Hours: \$124.00**



**Parking Lots**

Seven main campus parking lots are conveniently located near campus. Perfect for community drives and outside events.

**Capacity: 500**  
**Flat Rate:**  
**≤ 4Hours (1 hr. min.): \$75.00**  
**>4 Hours: \$125.00**



**Student Rec Center (SRC)  
SRC 4514A and B**

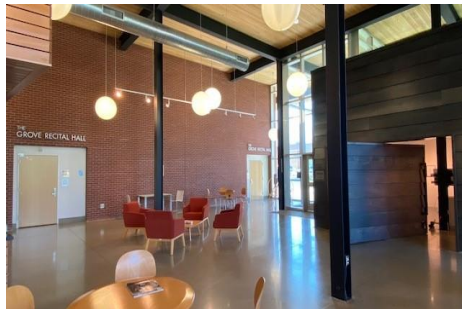
The main floor is home to a double court gymnasium, a multi-use studio for Yoga, dance and other group activities. The 2nd floor Mezzanine contains state of the art cardiovascular equipment, free weights and other free movement training. For more information visit here [SRC](#).



**MAC Grove Recital Hall  
MAC1575**

The Grove Recital Hall is the crown jewel of the MAC The space boasts pristine acoustics, a fully equipped soundboard, stage lighting and a Steinway. Theater style seating with lecture set up.

**Capacity: 160**  
**Flat Rate:**  
**≤ 4Hours (1 hr. min.): \$150.00**  
**>4 Hours: \$275.00**



**MAC Grove Lobby  
MAC1501**

The MAC Grove Lobby is the entryway to both The Grove Recital Hall and The MAC Gallery. This spacious, creative space is available for receptions, ticketing and tabling.

**Capacity: 160**  
**Flat Rate:**  
**≤ 4Hours (1 hr. min.): \$75.00**  
**>4 Hours: \$75.00**



**MAC Patio**

The MAC Patio and lawns surrounding it welcome space to host an outdoor gathering. It is on the north side of the building, directly across from the historic Wells House. The patio is home to rotating student art displays and provides a shaded area for BBQs, picnic and any number of outdoor gatherings.

**Capacity: 100**  
**Flat Rate:**  
**≤ 4Hours (1 hr. min.): \$50.00**  
**>4 Hours: \$50.00**



**MAC Sorom Recording Studio  
MAC1564**

The Sorom Recording Studio is a state-of-the-art recording studio with a full range of acoustics, recording equipment, multiple instruments, and an isolation booth. The amenities in the studio are variable and can be changed to suit recording/artist needs.

**Capacity: 6**  
**Flat Rate:**  
**(1 hr. min.): \$300.00**



**MAC Sparks Rehearsal Studio  
MAC1569**

The Sparks Rehearsal Space houses the WVC choirs and ensembles. The vast open space has beautiful natural lighting, vaulted ceilings, three-tier platforms for large group rehearsal/seating, a grand piano, adjustable acoustics, and moveable surfaces for teaching and presenting.

**Capacity: 80**  
**Flat Rate:**  
**≤ 4Hours (1 hr. min.): \$100.00**  
**>4 Hours: \$150.00**